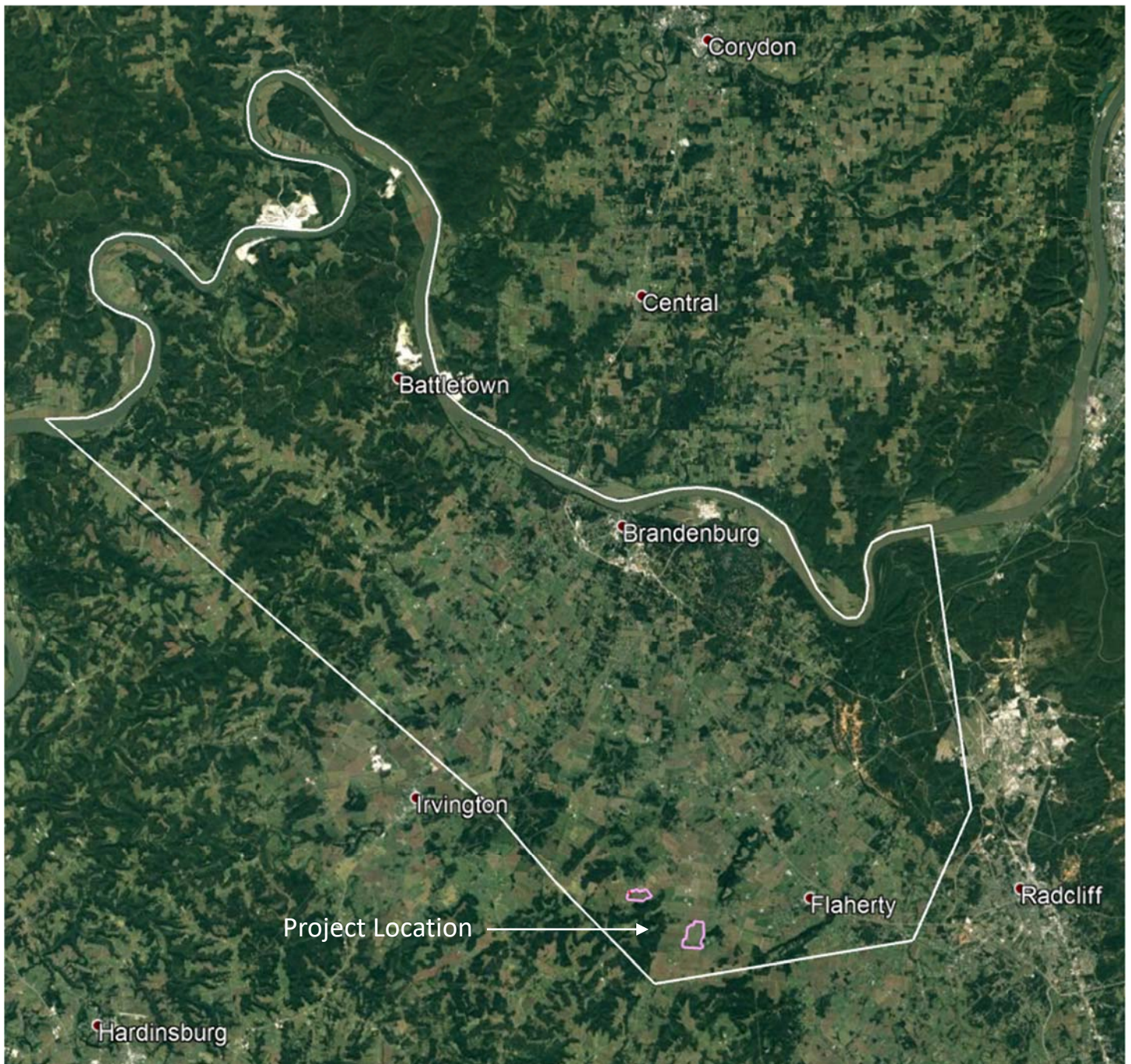


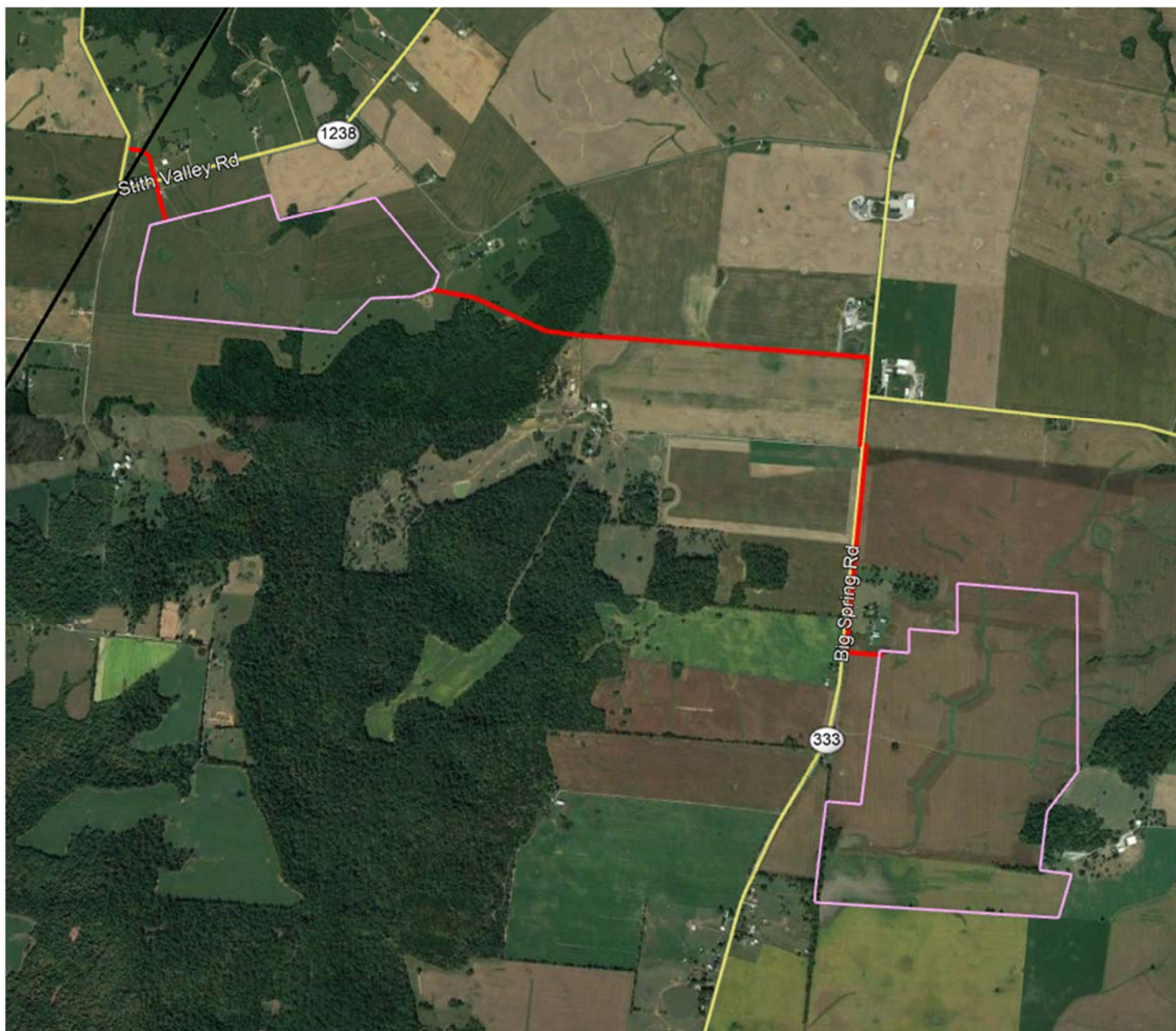
Meade County Solar
Project Location

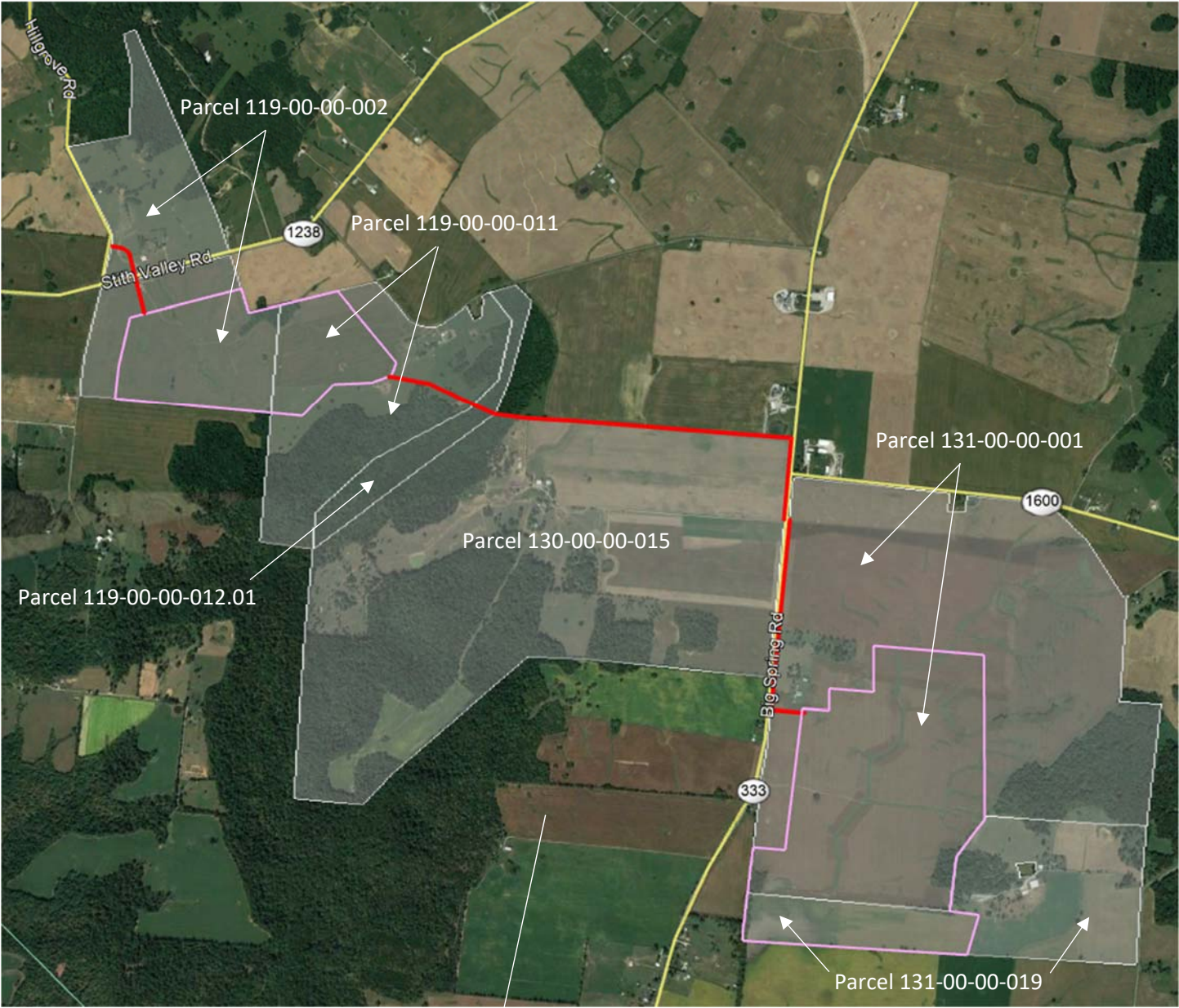


The solar farm will be located in southern Meade County, approximately 4 miles west of Flaherty.

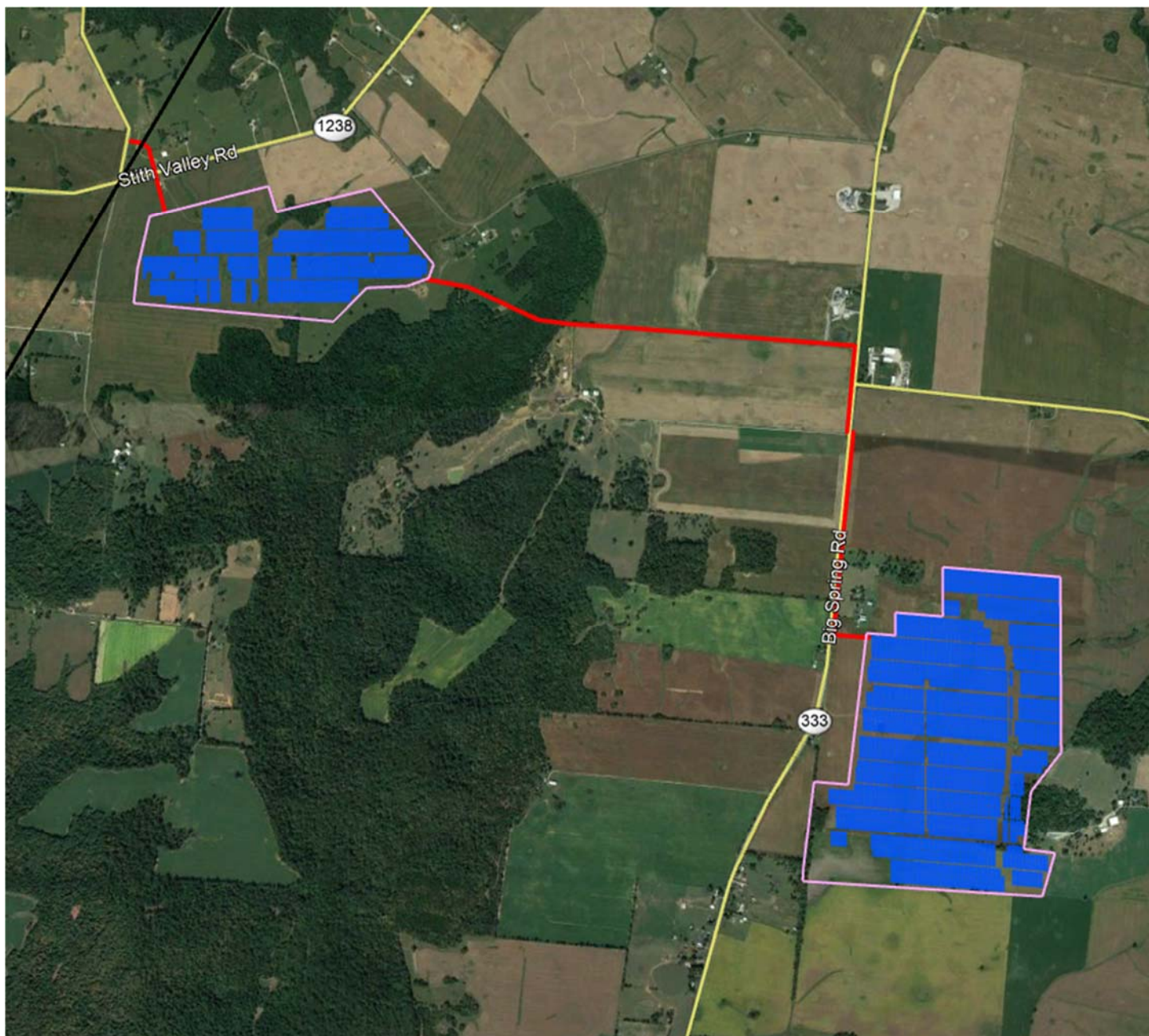


The project site is comprised of two sections: one section off Stith Valley Road, and one section off Big Spring Road.

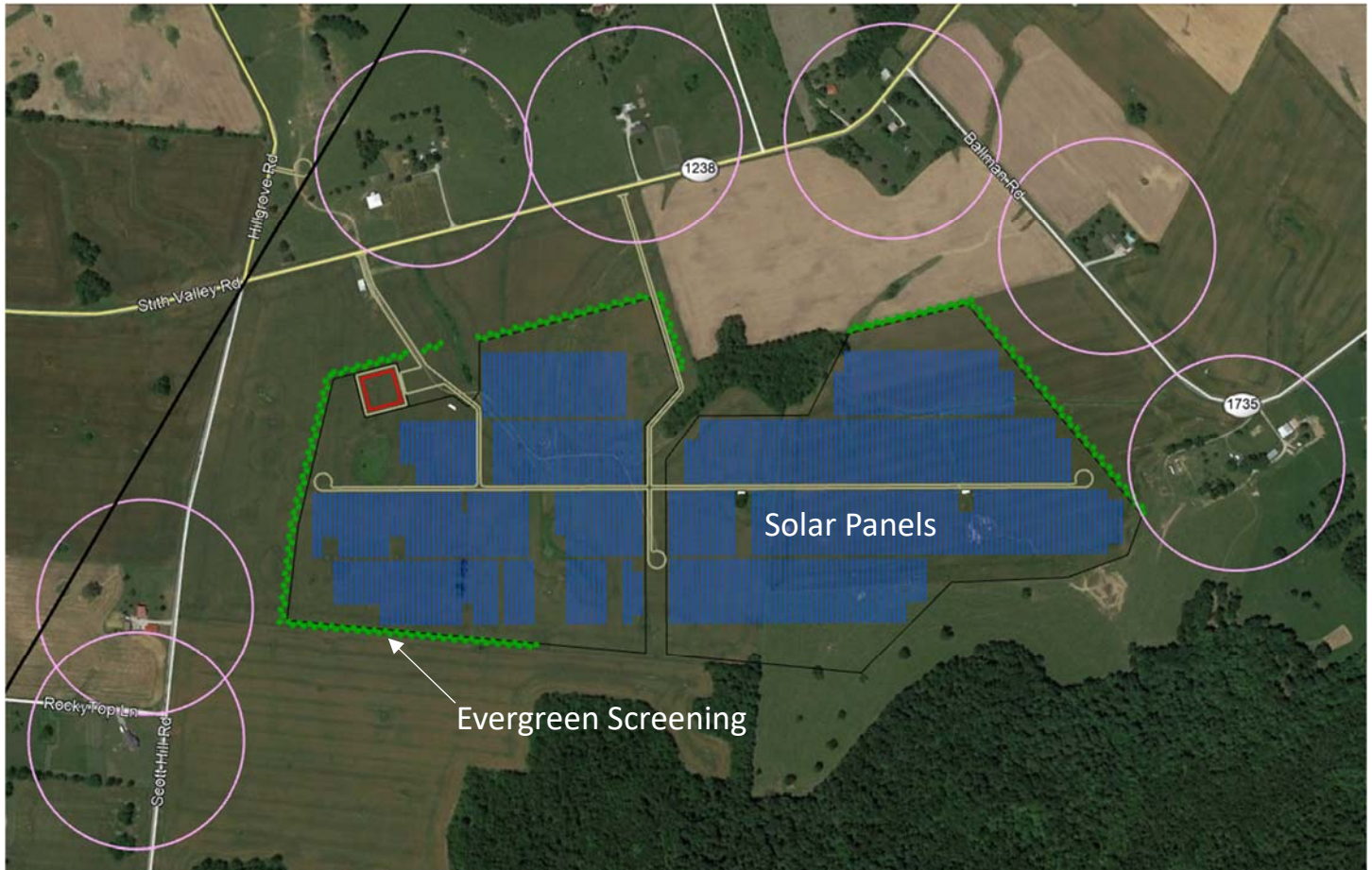




The solar panels will be set back from public roads and neighboring residences by at least 500 feet.



This close-up of the Stith Valley section of the solar farm illustrates the setbacks from neighboring houses. The pink circles have a radius of 500 feet. Where existing natural vegetation doesn't exist between the solar farm and neighboring houses, a double offset row of evergreens will be planted.



This close-up of the Big Spring section of the solar farm illustrates the setbacks from neighboring houses. The pink circles have a radius of 500 feet. Where existing natural vegetation doesn't exist between the solar farm and neighboring houses, a double offset row of evergreens will be planted.

