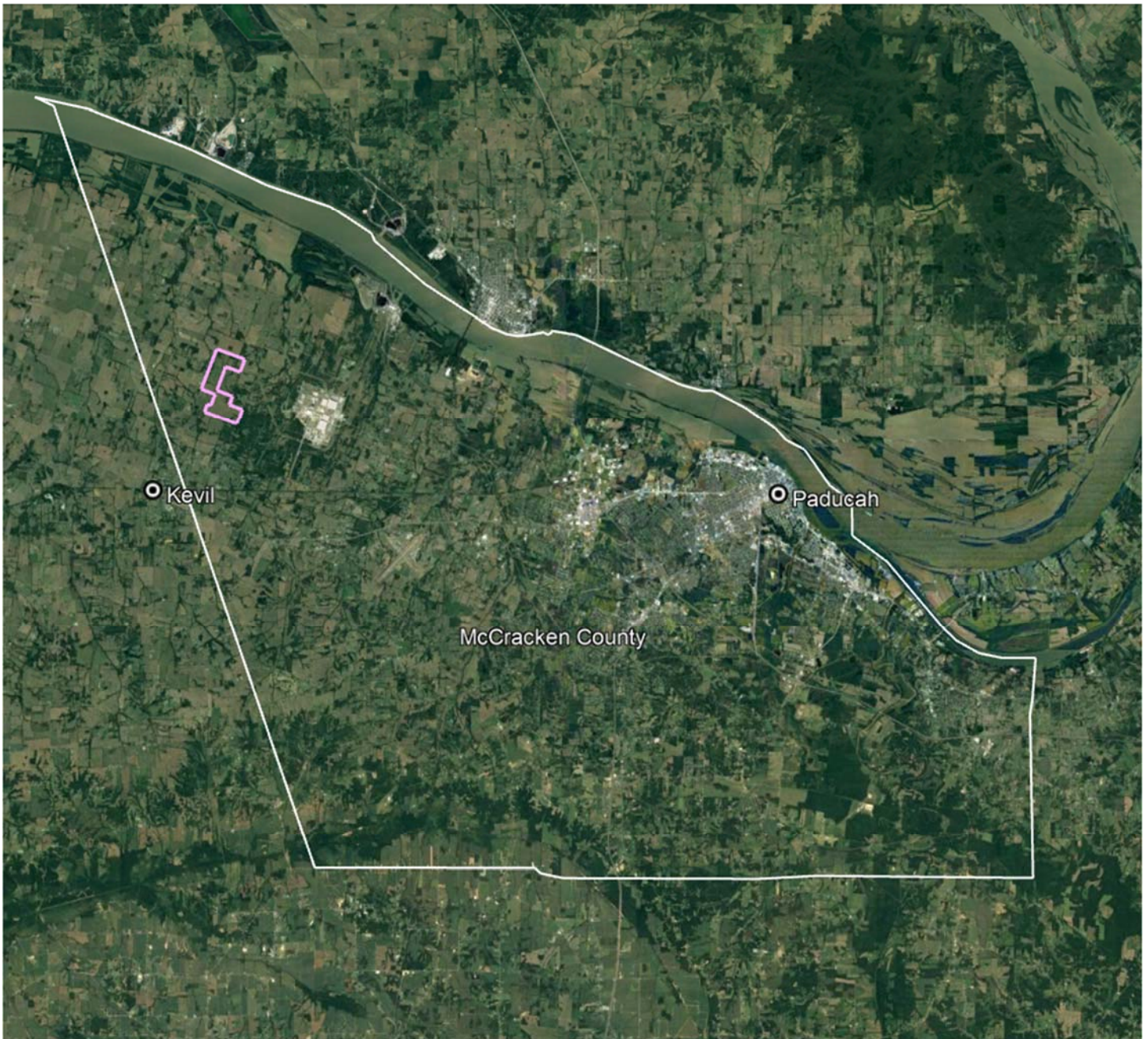
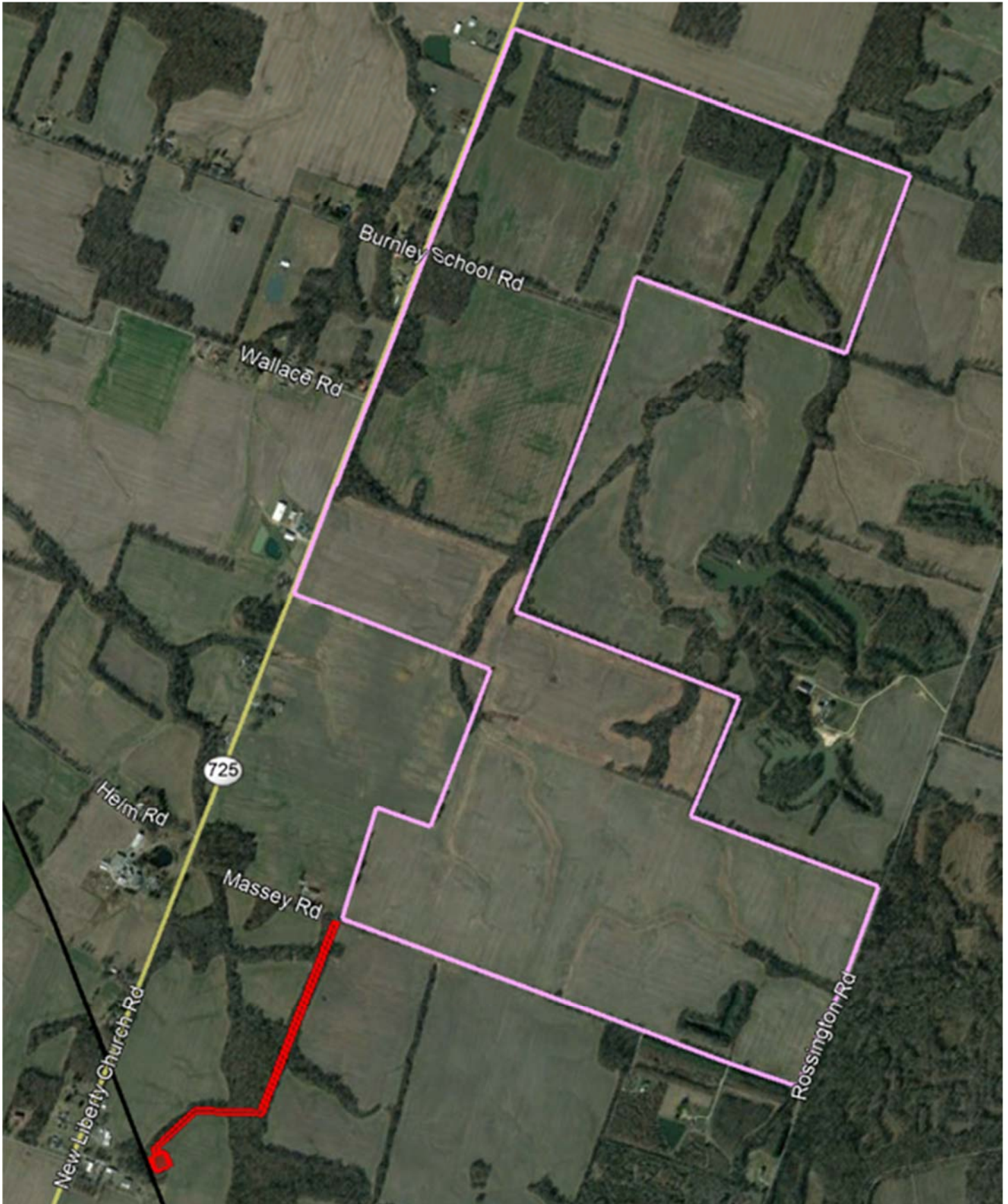


**McCracken County Solar**  
Project Location

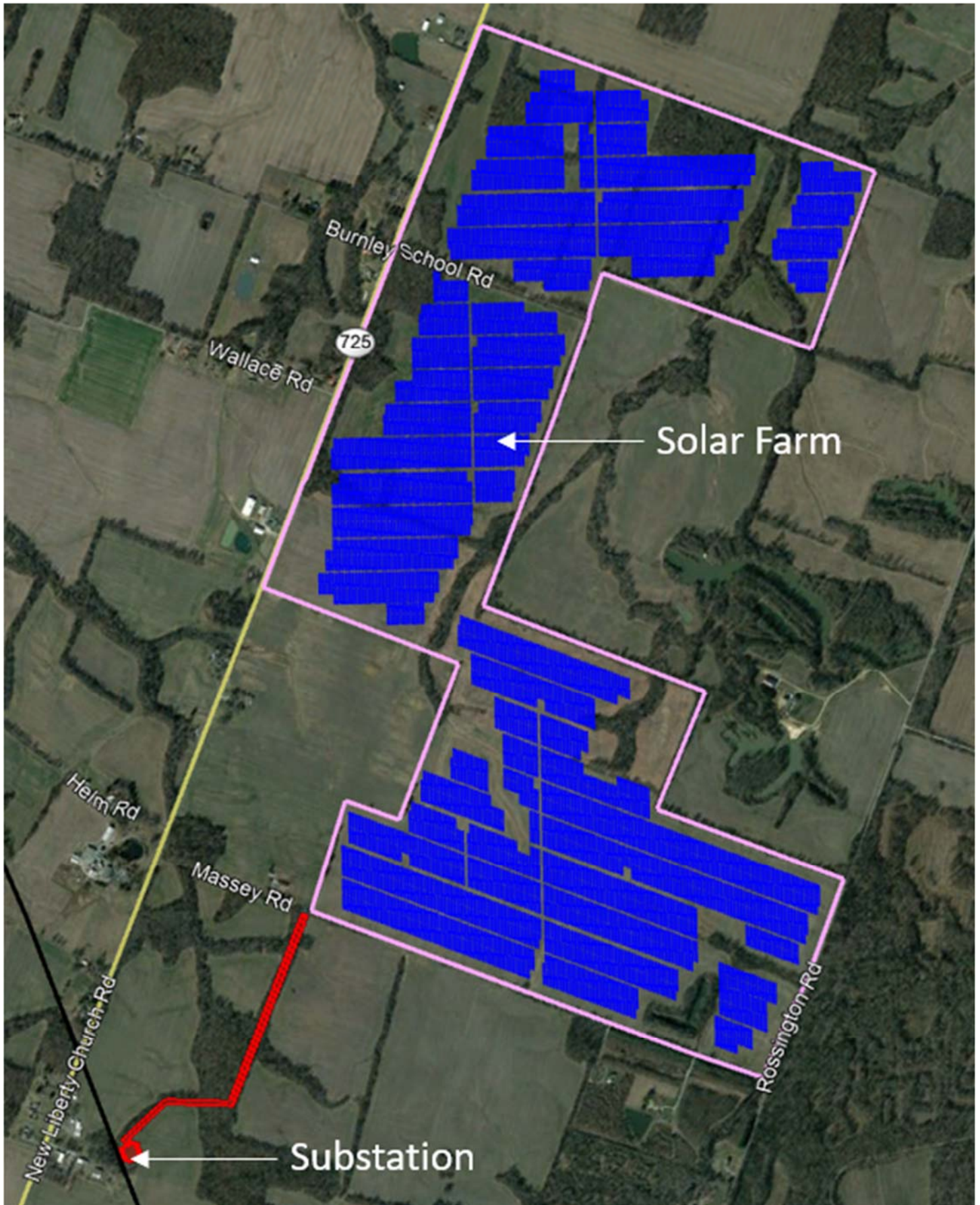


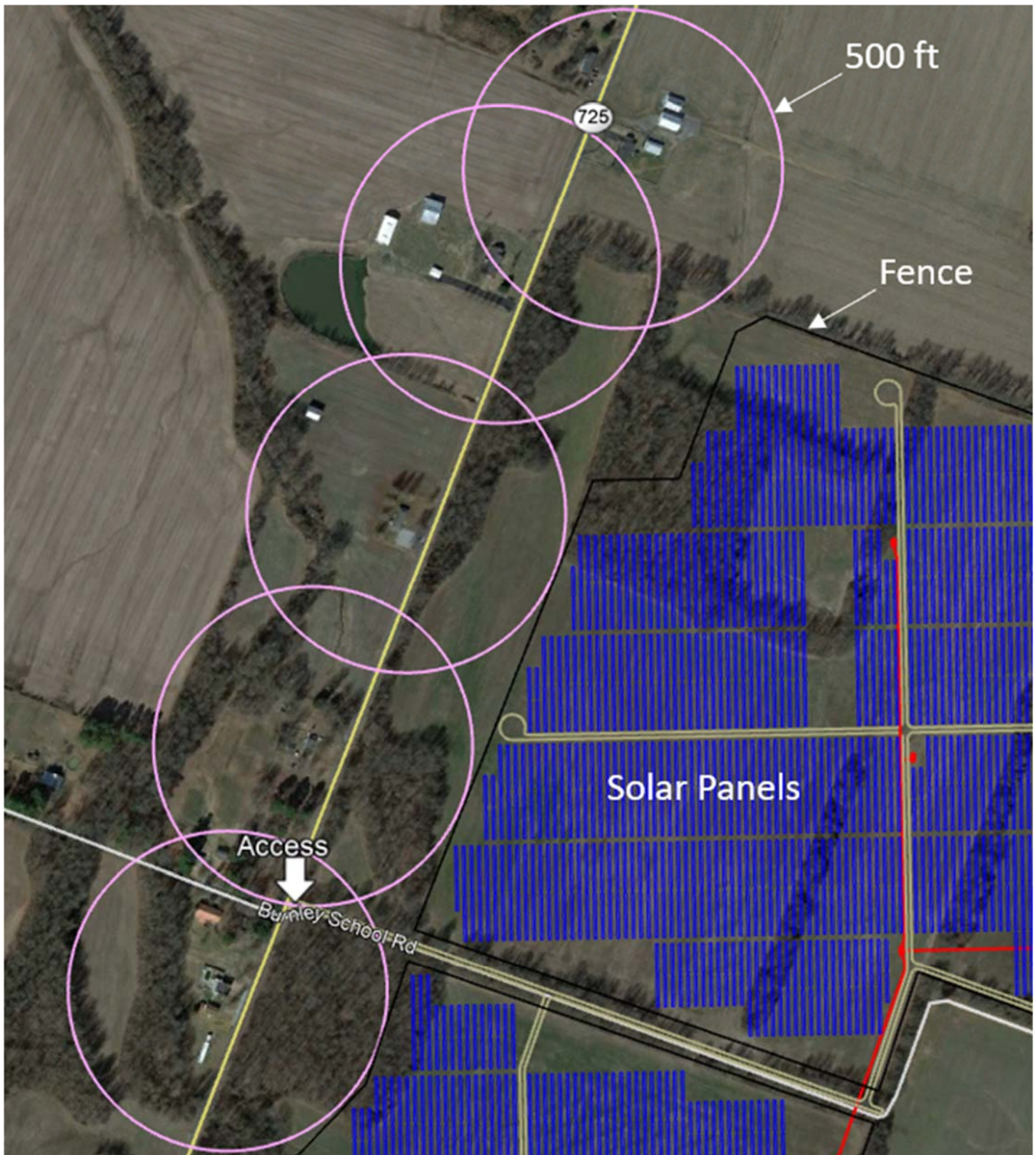
The project will be located in western McCracken County, approximately 2 ½ miles northeast of Kevil, KY.



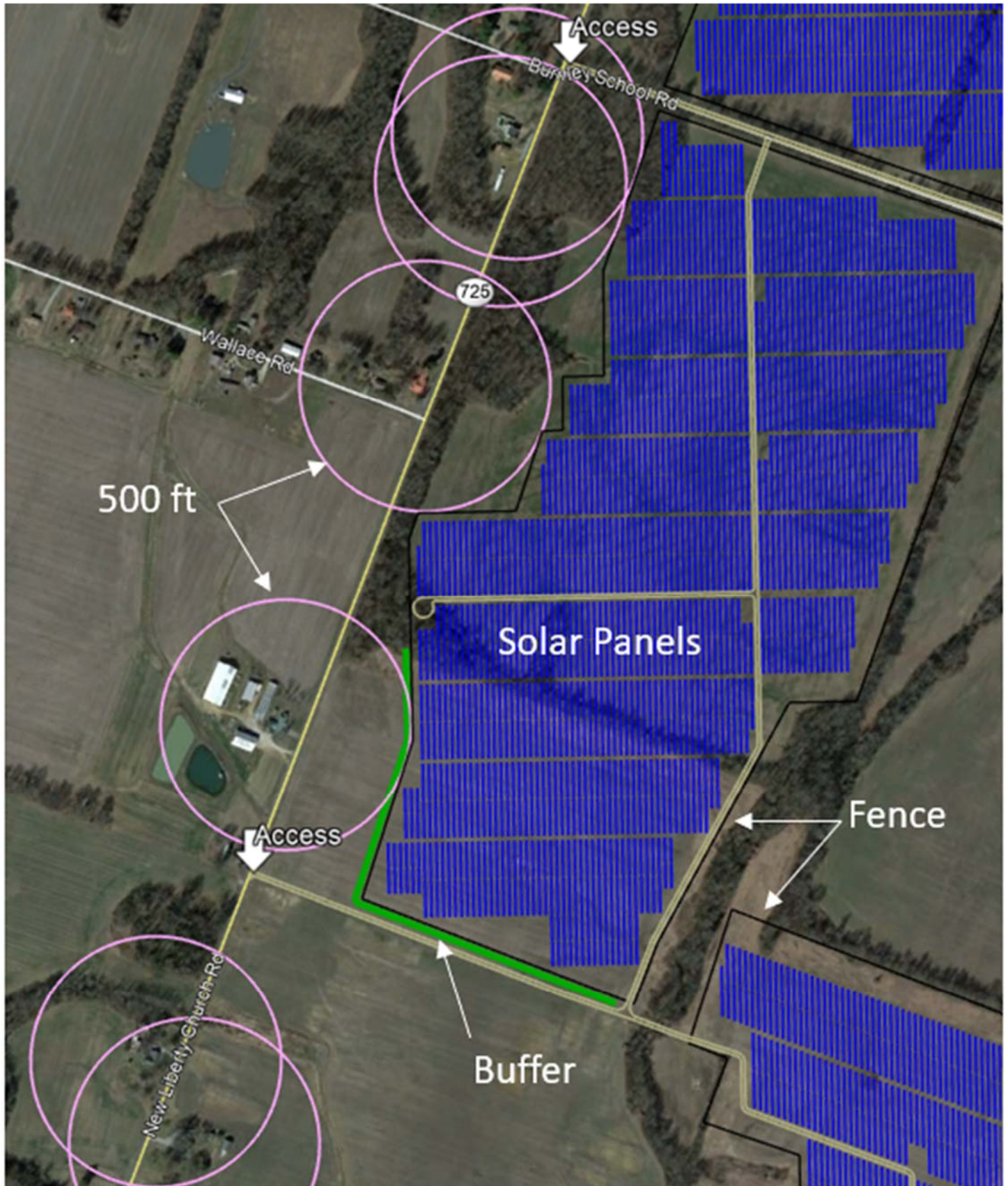
The project site includes approximately 615 acres of land along New Liberty Church Road.







This close-up of the northern section of the solar farm illustrates the setbacks from neighboring houses. This section of the solar farm benefits from a mature existing natural buffer along New Liberty Church Road. This buffer will be retained. Access to this section will be from the 'Burnley School Road' – a dirt road that will remain open, preserving access to the adjacent farm fields.



A new access road to this section will be installed along New Liberty Church Road. A double-row of evergreen plantings will be installed along the southwest corner of this section to provide a visual buffer to neighbors and passing cars.



Access to this section will be from an existing farm path along Massey Road. A double-row of evergreen plantings will be installed around the perimeter of this section, filling the gaps where natural vegetation does not exist.



Power lines will run from the southern section of the solar farm to a new substation that will connect the solar farm to the Big Rivers transmission line. The setback between the new substation and the nearest house is in excess of 500 feet. The natural vegetative buffer at the substation location will be retained.