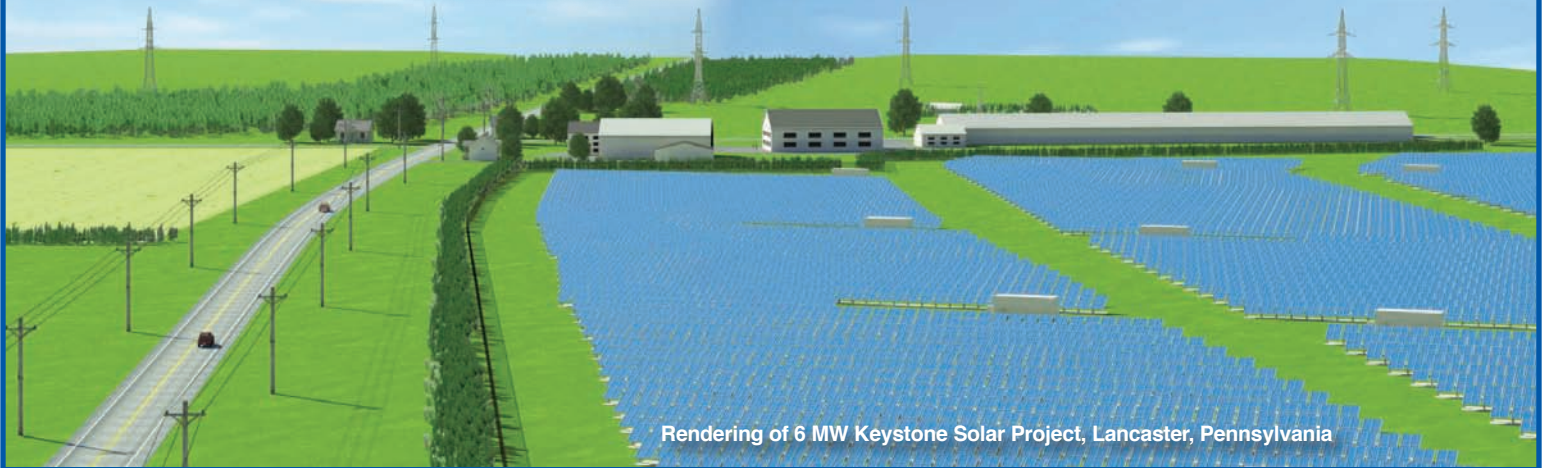




**COMMUNITY
ENERGY**[®]

building a clean energy future



Rendering of 6 MW Keystone Solar Project, Lancaster, Pennsylvania

2010 SUPPLY & DEMAND REPORT

Dear Renewable Energy Customers and Partners,

It was another successful year in 2010 for Community Energy and our mission of building a clean energy future. Our customers purchased more than 2.2 billion kilowatt-hours (kWh) of renewable energy, which is equal to over 950,000 metric tons of avoided carbon dioxide. That's equivalent to preserving approximately 9,400 acres of trees from deforestation or removing over 186,000 vehicles from the road each year!

The first utility-scale solar project developed by Community Energy Solar, the 7 MW Vineland, NJ project, will be built this year by Constellation Energy. They are expected to break ground very soon. Also in the pipeline is a 6 MW solar project in Lancaster, PA which will be the largest utility-scale solar project in Pennsylvania. Community Energy Solar has hundreds of MWs of projects in various stages of planning.

Community Energy's retail marketing team had great success in 2010 as well. The year marked continued growth and a positive impact, greening electric grids across the Mid-Atlantic and Northeastern U.S. Once again, five Community Energy programs appeared in the National Renewable Energy Laboratory's Top Ten Green Power Programs list for 2010.

Thank you once again for a successful year in working to build a clean energy future. We look forward to engaging with you in 2011 on these exciting new initiatives!

Sincerely,

The Community Energy Team



we never run out of energy

2010 RENEWABLE ENERGY SUPPLY

Community Energy sourced 2010 supply from 17 states across the U.S. Almost 93% came from wind, with approximately 7% from small-hydro, and less than 1% from solar.

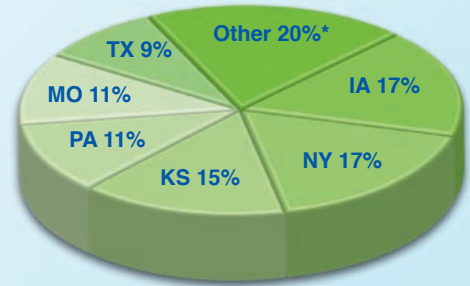
RESIDENTIAL GREEN POWER PROGRAMS

Community Energy marketed green power programs in 20 utility territories across the U.S., including the newly added Granite State Electric program with National Grid. Total customers reached 115,000 in 2010 having the environmental benefit equivalent to removing over 49,000 vehicles from the road or planting more than 6.4 million tree seedlings that grow for ten years! Community Energy plays a critical role in marketing green power in five programs that received recognition on NREL's Top Ten Green Power Programs lists, which include: CTCleanEnergyOptions, National Grid's Green-up, Iberdrola USA's *Catch the Wind*, PECO Wind, and The City of Naperville Renewable Energy Program.

COMMERCIAL & INSTITUTIONAL CUSTOMERS

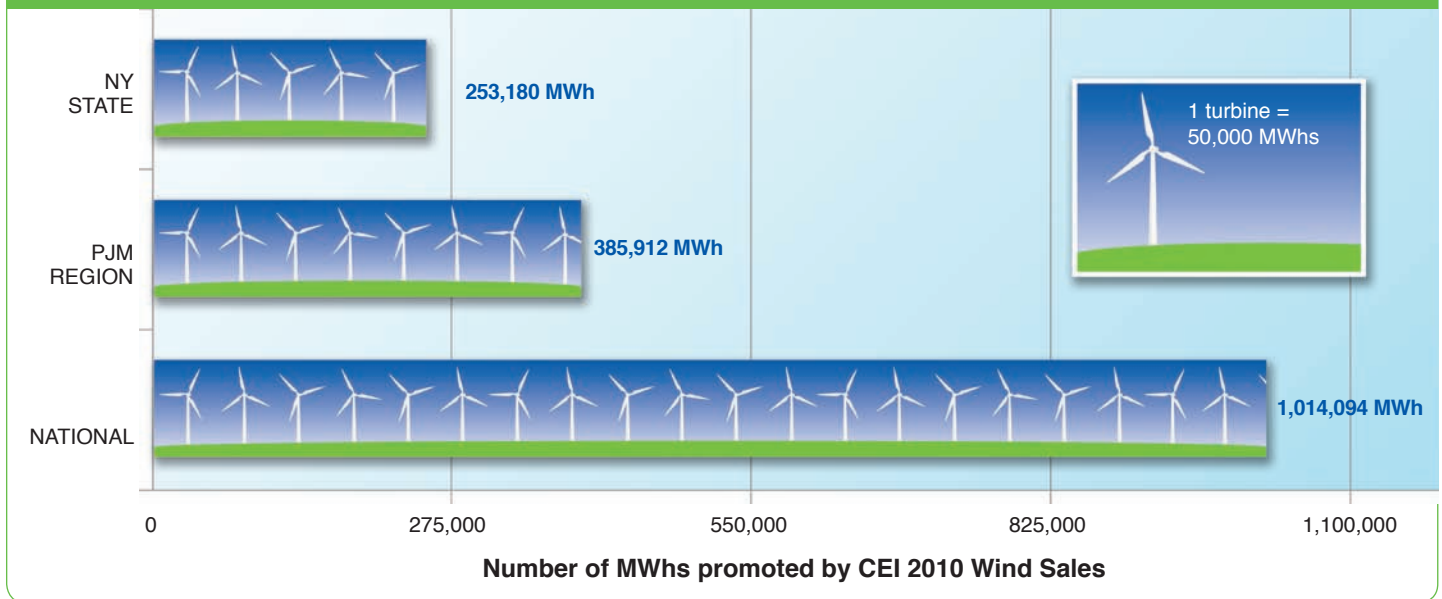
Commercial and Institutional Customers also contributed a great deal to 2010 success. The cumulative impact of these customers totaled over 1 million MWh of clean energy, the equivalent of avoiding the release of over 700,000 metric tons of carbon dioxide. This is the same as not burning over 3,800 railcars of coal or recycling almost 245,000 tons of waste rather than sending it to a landfill each year.

2010 RENEWABLE ENERGY SUPPLY BY SOURCE LOCATION



*The following states supplied 5% or less of our renewable energy portfolio: ND, WV, CT, NE, IL, NJ, VT, MA, VA, MN.

IMPACT OF COMMUNITY ENERGY 2010 WIND SALES BY REGION



NEW RETAIL INITIATIVES FOR 2011...

COMPETITIVE ELECTRICITY SUPPLY OFFERINGS

Community Energy recently announced two competitive electricity supply offerings in Pennsylvania's PECO territory and New Jersey's ACE, JCPL, and PSE&G territories. The product offerings are sourced entirely from wind within the region and are already serving customers in partnership with VerdeEnergy USA, a leading supplier in the Northeast. Find out more at www.CommunityEnergyInc.com/PAWind and www.CommunityEnergyInc.com/NJWind.

STAYING CONNECTED

In an effort to keep customers informed, Community Energy has introduced a new webpage dedicated to customer resources. Visit www.CommunityEnergyInc.com/Customers to access the page, or check us out on Facebook, Twitter, or LinkedIn for current news and industry updates.

